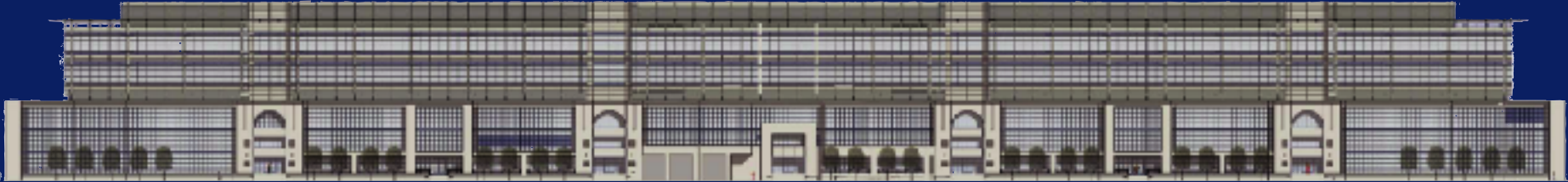


GOING TO GREAT LENGTHS... AND NEW HEIGHTS...



EXPANSION TO MATCH YOUR VISION

McCarthy Cook & Co, in sponsorship with RREEF, announces the construction of a 175,000 square foot expansion at China Basin, in two floors at the top of the Berry Street building. Leasing is underway now, with occupancy planned for mid-2008.

Collaboration: Located at the gateway to Mission Bay, China Basin is part of San Francisco's newest, most vibrant and diverse business community. Current tenant industries include health & life science, technology, software, media and telecommunications.

Harmony: China Basin combines a gracious, waterfront campus setting with easy access to restaurants, entertainment, housing, parking and public transit.

Identity: China Basin offers exceptional prestige, with institutional ownership, Class A services and management. The development currently comprises 730,000 square feet in two buildings.

New Class A, steel frame construction guarantees unmatched safety.

Adaptability: Designed to meet the needs of life science, technology and office tenants, the addition features expansive floorplates, continuous windowline, and a spacious rooftop and interstitial floor below to accommodate mechanical systems and infrastructure.



**For details contact Jay Edwards,
Leasing Director,
McCarthy Cook & Co.
415-543-3838
jte@mccarthycook.com**